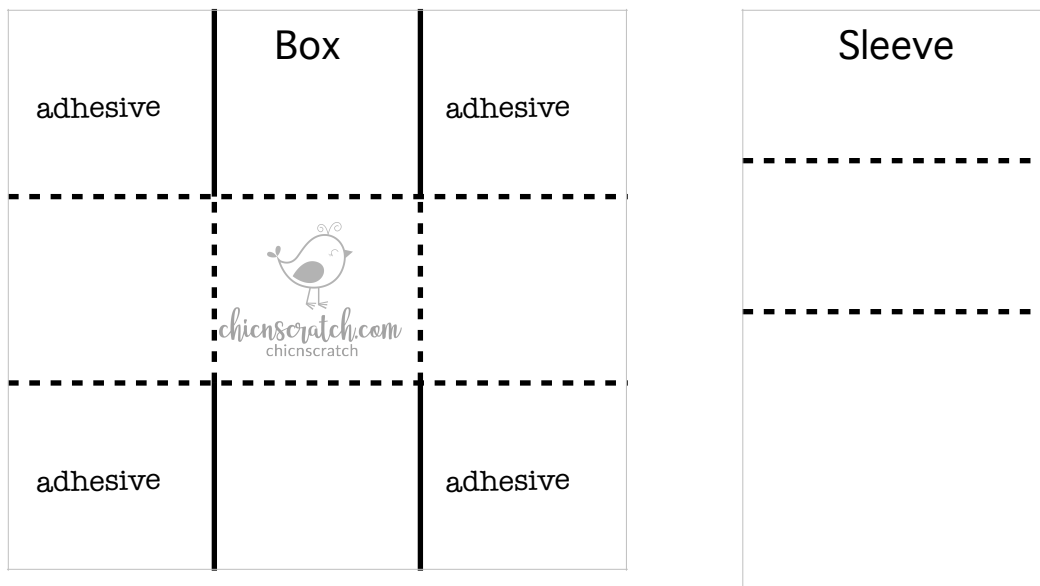




chic'n scratch

Box Template #52



Box measures: 3" x 3" x 1-1/2"
 Score on Dotted Lines - Cut on Solid Lines

Cardstock: 5-7/8" x 5-7/8"
 Score on all four sides @ 1-1/2"

Cardstock: 3" x 10"
 Score @ 2", 3-1/2", 6-1/2", 8"

Cardstock (Easel): 3" x 6"
 Score on 6" side @ 3" & 4-1/2"

Lay the 3" part on top of the box and loosely wrap the rest around sides to bottom and glue.

Cardstock: 3" x 3"

Designer Series Paper: 2-7/8" x 2-7/8" (two pieces)
 2-7/8" x 1-3/8" (3 pieces)