



[CLICK HERE TO WATCH THE VIDEO](#)

DAY #10 FROSTED FRAMES BOX

Please read instructions all the way through before you begin.

STAMPS

- ☐ Snow Front Stamp Set - 150483
- ☐ Rustic Retreat Cling Stamp Set - 150285

INK

- ☐ Seaside Spray Classic Stampin' Pad - 150085
- ☐ Early Espresso Classic Stampin' Pad - 147114
- ☐ Real Red Classic Stampin' Pad - 147084

PAPER

- ☐ Seaside Spray Cardstock - 150883
- ☐ Real Red Cardstock - 102482
- ☐ Whisper White Cardstock - 100730
- ☐ Whisper White Thick Cardstock - 140272

ACCESSORIES

- ☐ Frosted Frames Dies - 150658
- ☐ Woodland Embossing Folder - 152881
- ☐ Seaside Spray 1/4" (6.4 Mm) Metallic Ribbon - 150446
- ☐ Real Red 3/8" (1 Cm) Cotton Ribbon - 146925
- ☐ Snowfall Accents Puff Paint - 150691
- ☐ Ice Stampin' Glitter - 150445
- ☐ 1" (2.5 Cm) Circle Punch - 119868
- ☐ Silicone Craft Sheet - 127853
- ☐ Stampin' Pierce Mat - 126199
- ☐ Heat Tool (Us And Canada) - 129053
- ☐ Take Your Pick - 144107
- ☐ Simply Scored - 122334
- ☐ Multipurpose Liquid Glue - 110755
- ☐ Bone Folder - 102300
- ☐ Stampin' Dimensionals - 104430
- ☐ Tear & Tape Adhesive - 138995
- ☐ Stampin' Dimensionals - 104430
- ☐ Multipurpose Liquid Glue - 110755
- ☐ Small Grid Paper - 149621
- ☐ Mini Glue Dots - 103683

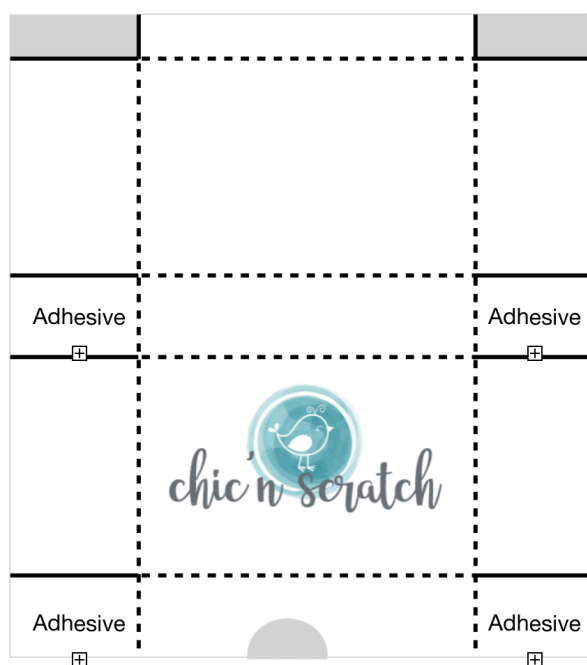
MEASUREMENTS

Seaside Spray or Thick Whisper White: 8-1/2" x 11"

Seaside Spray or Real Red: scraps for diecutting

Whisper White: 5-1/4" x 3-1/2", scraps for die cutting

Chic n Scratch Box #20



Remove Shaded - Cut on Solid Lines - Score on Dotted Lines

Cardstock: 8-1/2" x 11"

Score on portrait side @ 1-1/2" on both sides

Score on landscape side @ 1-1/2", 5-1/4", 6-3/4", 10-1/2"



INSTRUCTIONS

1. Using the Simply Scored Scoring Tool score the 8-1/2" x 11" piece of the Seaside Spray Cardstock on the portrait side at 1-1/2" on both sides. Turn on landscape side and score at 1-1/2", 5-1/4", 6-3/4", 10-1/2".
2. Fold on score lines and burnish with Bone Folder. Cut out the box using Box Template #20 or by watching the video. Use the 1" Circle Punch to cut a half circle, add Tear & Tape Adhesive and assemble box.
3. Emboss the Whisper White Cardstock that measures 5-1/4" x 3-1/2" with the Woodland Embossing Folder. Add this layer to the top of the box using Liquid Glue.
4. Using the Frosted Frames Dies and cut out the Whisper White frame and cut out the Seaside Spray frame.
5. Stamp the greeting with Early Espresso Ink on the Whisper White frame. Stamp the deer next and then the tree. Stamp the bluejay (bird) with Seaside Spray Ink. If you want to add the snow ... stamp off the Seaside Spray ink before you stamp it in the right corner.
6. To add snow to the Seaside frame start with one side and apply the Snow Accents Puff Paint and then sprinkle on the Ice Stampin' Glitter. Heat set it with the Heat Tool. Repeat this process on the other side.
7. Add the main image to the Seaside frame with Stampin' Dimensionals. Add this layer to top of box with Stampin' Dimensionals.
8. Tie a bow with the Seaside Spray Metallic Ribbon and add to box with Mini Glue Dots.
9. This box measures 5-1/2" x 3-3/4" x 1-1/2".

