



chicnscratch.com
chicnscratch

CLICK HERE TO WATCH THE VIDEO

Week #5 - Halloween Box

Please read instructions all the way through before you begin.

STAMPS

- Spooktacular Bash Bundle - 153040
- Spooktacular Bash Cling Stamp Set - 150544

INK

- Tuxedo Black Memento Ink Pad - 132708
- Crushed Curry Classic Stampin' Pad - 147087

PAPER

- Basic Black - 121045
- Monster Bash Designer Series Paper - 150447
- Crushed Curry - 131199

ACCESSORIES

- Ornate Frames Dies - 150664
- Layering Circles Dies - 141705
- Stylish Scroll Embossing Folder - 150665
- Monster Bash Enamel Shapes - 150448
- Crushed Curry 3/8" (1 Cm) Crinkled Seam Binding Ribbon - 149444
- 1" (2.5 Cm) Circle Punch - 119868
- Black Stampin' Dimensionals - 150893
- Take Your Pick - 144107
- Simply Scored - 122334
- Multipurpose Liquid Glue - 110755
- Stamping Sponges - 141337
- Mini Glue Dots - 103683
- Paper Snips - 103579
- Bone Folder - 102300
- Tear & Tape Adhesive - 138995

MEASUREMENTS

Basic Black: 11" x 6-1/2", 3" x 4"

Crushed Curry: 2" x 4", 2" x 1-1/2"

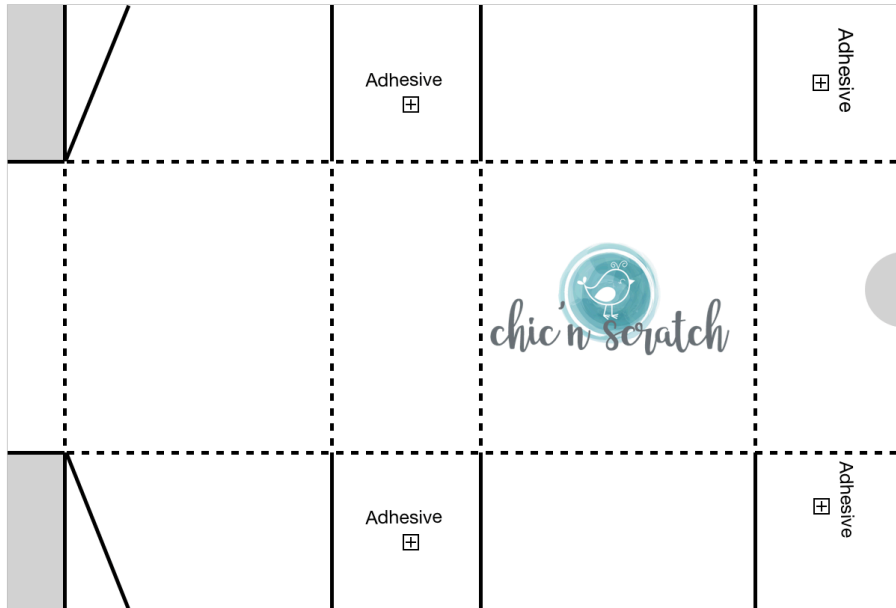
Monster Bash Designer Series Paper: 3-3/8" x 3-1/2", 3-1/2" x 1-1/4" (2), 3-1/4" x 1-1/4" (2), Jars (4)

INSTRUCTIONS

1. Score the 11" x 6-1/2" piece of Basic Black Cardstock at 1-1/2" on both sides of the portrait side (6-1/2"). Turn and score on landscape side at 1-1/2", 5-1/4", 6-3/4", 10-1/2".
2. Fold on score lines, burnish with a Bone Folder.
3. Cut box using the diagram included, add adhesive and assemble box.
4. Use the 1" Circle Punch to cut a half circle for the box opening.
5. Sponge the edges of the Designer Series Paper with Crushed Curry Ink and add to box. Re-punch the half 1" circle.
6. Stamp greeting with Memento Ink and cut image out using the Ornate Frames Dies.
7. Emboss the Basic Black Cardstock with the Stylish Scroll Embossing Folder and then cut out a 2-5/8" circle using the Layering Circles Dies.
8. Cut out a Crushed Curry ornate frame with the Ornate Frames Dies.
9. Fussy cut the jars on the Designer Series Paper using Paper Snips.
10. Assemble layers, add Crushed Curry frame to the Basic Black circle using Liquid Glue. Add greeting to the right side with a Black Stampin' Dimensional. Add three jars with Liquid Glue and pop up the 4th with a Black Stampin' Dimensional. Add to box with Stampin' Dimensionals.
11. Tie a bow with the Crushed Curry Seam Binding and add it to the box with a Mini Glue Dot.
12. Add three Monster Bash Enamel Shapes to top right corner.

Please read instructions all the way through before you begin.

Box #9



Remove Shaded, Score on Dotted Lines, Cut on Solid Lines
Cardstock: 11" x 6-1/2"

