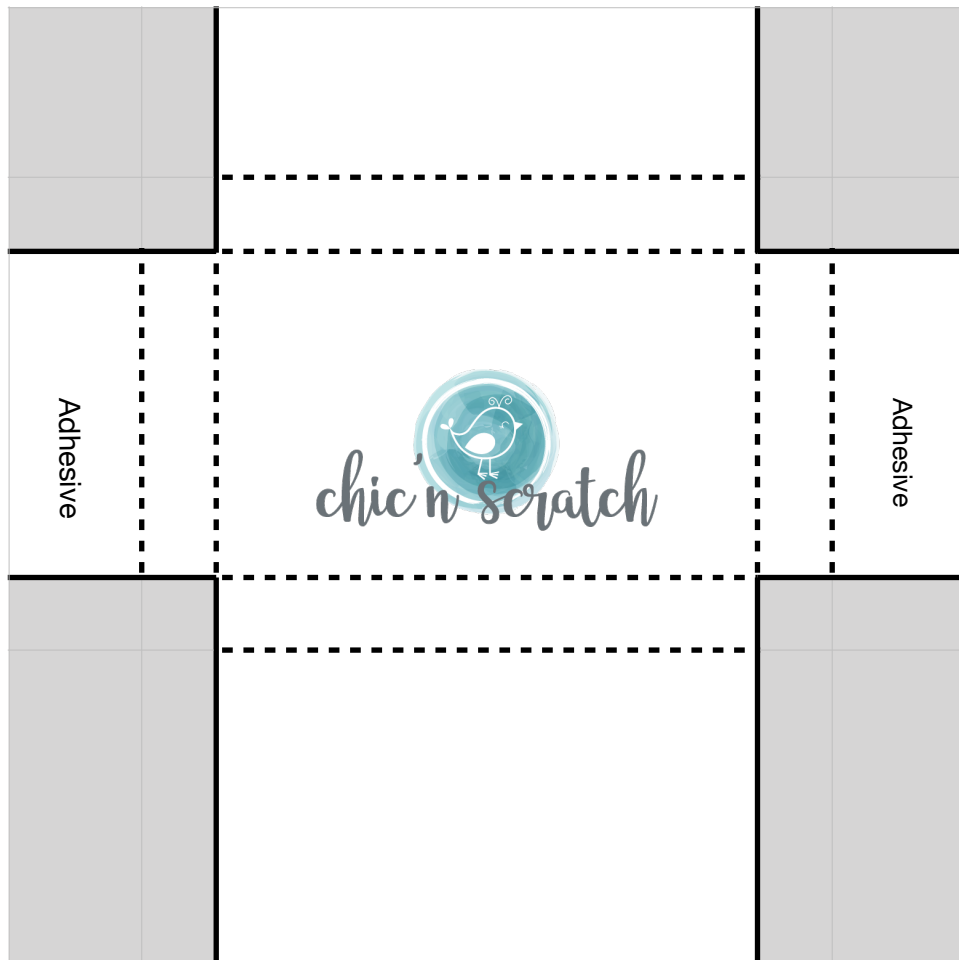


Box #5



Remove Shaded, Score on Dotted Lines, Cut on Solid Lines
Cardstock: 7-1/4" x 6-3/4"

Score on landscape side (7-1/4" side) @ 1-1/2, 2, 4-1/2, 5

Score on portrait side side (6-3/4" side) @ 1" & 1-1/2" on both sides