

Home to Roost

Gift Box

Angie Juda

<http://orderwithangie.com>

angie@chicnscratch.com

ChicnScratch.com



Lemon Lime Twist: 8-1/2 x 10-11/16

Score on L side @ 3/4, 3-3/4, 5-3/4, 8-3/4,

Score on P side @ 3/4 & 2-3/4 on both sides

Botanical Butterfly Designer Series Paper: 2-3/4 x 2-3/4

2-3/4 x 1-3/4 (4 pcs)

Lemon Lime Twist: scraps

Whisper White: scraps

Home to Roost

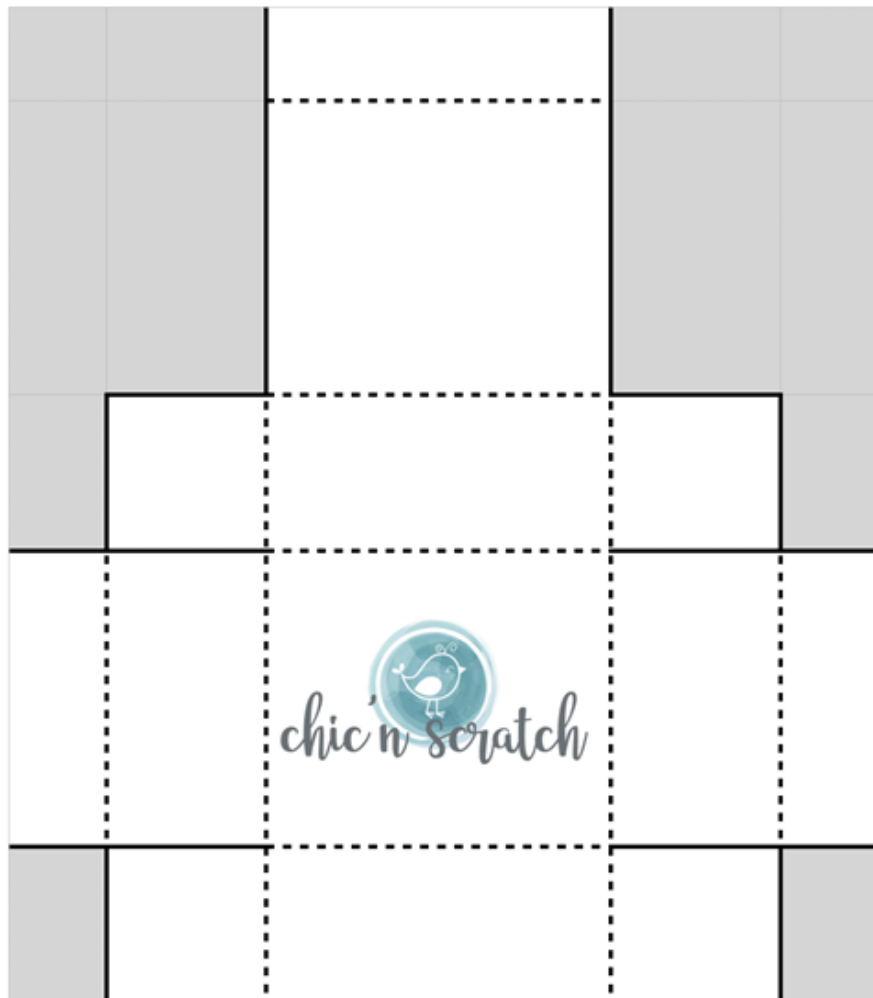
Gift Box

Angie Juda

<http://orderwithangie.com>

angie@chicnscratch.com

ChicnScratch.com



Remove Shaded Areas
Cut on Solid Line - Score on Dotted Lines

Home to Roost

Gift Box

Angie Juda

<http://orderwithangie.com>

angie@chicnscratch.com

ChicnScratch.com



[Home To Roost Cling Stamp Set](#)

149736



[By The Bay Cling Stamp Set](#)

149739



[Tuxedo Black Memento Ink Pad](#)

132708



[Granny Apple Green Stampin' Blends Markers Combo Pack](#)

147274



[Pool Party Light Stampin' Blends Marker](#)

144595



[Light Flirty Flamingo Stampin' Blends Marker](#)

147031



[Botanical Butterfly Designer Series Paper](#)

149622



[Lemon Lime Twist 8-1/2" X 11" Cardstock](#)

144245

Home to Roost

Gift Box

Angie Juda

<http://orderwithangie.com>

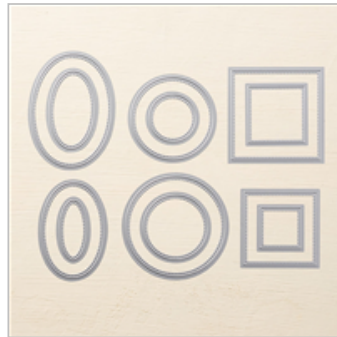
angie@chicnscratch.com

ChicnScratch.com



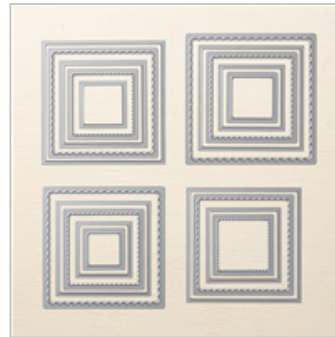
[Whisper White 8-1/2"](#)
[X 11" Cardstock](#)

100730



[Stitched Shapes](#)
[Framelits Dies](#)

145372



[Layering Squares](#)
[Framelits Dies](#)

141708



[3/4" \(1.9 Cm\) Circle](#)
[Punch](#)

119873



[1" \(2.5 Cm\) Circle](#)
[Punch](#)

119868



[Detailed Trio Punch](#)

146320



[Heart Epoxy Droplets](#)

148583



[Paper-Piercing Tool](#)

126189

Home to Roost

Gift Box

Angie Juda

<http://orderwithangie.com>

angie@chicnscratch.com

ChicnScratch.com



[Tear & Tape
Adhesive](#)

138995



[Stampin'
Dimensionals](#)

104430



[Mini Stampin'
Dimensionals](#)

144108



[Bone Folder](#)

102300



[Big Shot](#)

143263



[Magnetic Platform](#)

130658