

Dashing Along

Farmhouse Christmas Box

Angie Juda
<http://orderwithangie.com>
angie@chicnscratch.com
ChicnScratch.com



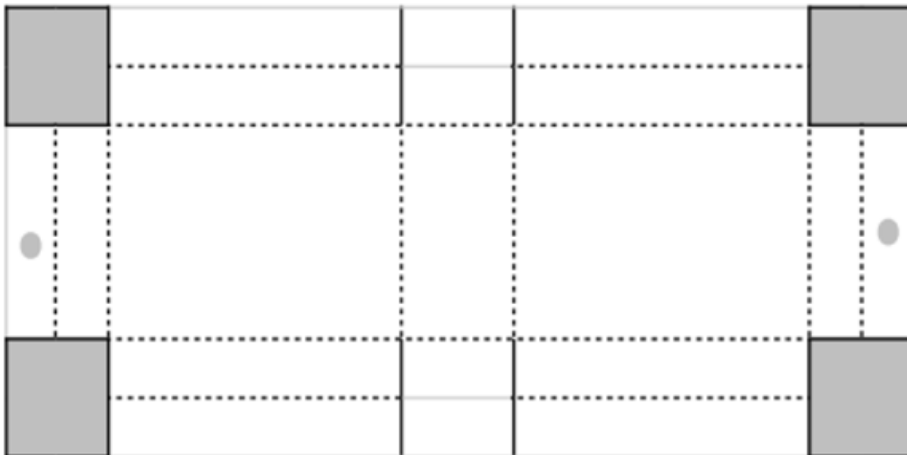
Dashing Along Designer Series Paper: 10 x 4-1/4

P - Score @ 1" on both sides

L - Score @ 5/8, 1-1/4, 4-1/2, 5-1/2, 8-3/4, 9-3/8

Early Espresso: Layering Circles Scallop Circle

Whisper White: 2" Circle Punch + Tailored Tag Punch



Dashing Along

Farmhouse Christmas Box

Angie Juda
<http://orderwithangie.com>
angie@chicnscratch.com
ChicnScratch.com

- [Farmhouse Christmas Photopolymer Stamp Set - 148478](#)
- [Cherry Cobbler Classic Stampin' Pad - 147083](#)
- [Early Espresso Classic Stampin' Pad - 147114](#)
- [Cherry Cobbler Dark Stampin' Blends Marker - 144575](#)
- [Dashing Along Designer Series Paper - 149903](#)
- [Santa's Workshop Enamel Shapes - 147811](#)
- [2" \(5.1 Cm\) Circle Punch - 133782](#)
- [Layering Circle Framelits Dies - 141705](#)
- [Tailored Tag Punch - 145667](#)
- [Detailed Trio Punch - 146320](#)
- [1/8" \(3.2 Mm\) Circle Punch - 134365](#)
- [Starburst Punch - 143717](#)
- [Festive Farmhouse Cotton Twine - 147888](#)
- [Whisper White 3/8" Classic Weave Ribbon - 144159](#)
- [Tear & Tape Adhesive - 138995](#)
- [Simply Shammy - 147042](#)
- [Paper-Piercing Tool - 126189](#)
- [Stampin' Dimensionals - 104430](#)
- [Simply Scored - 122334](#)
- [Big Shot - 143263](#)
- [Magnetic Platform - 130658](#)