



CHIC ^{Scratch}
12 weeks of Halloween

#10



HALLOWEEN BOX

STAMPS

- Bella & Friends Clear-Mount Stamp Sets - 141870, Wood-Mount - 141867
- Season To Sparkle Photopolymer Stamp Set - 144943

INK

- Tuxedo Black Memento - 132708
- Basic Gray Classic Stampin' Pad - 126981
- Stampin' Blends Markers Collection - 147475

PAPER

- Basic Black - 121045
- Pick A Pattern Designer Series Paper - 144163
- Whisper White - 100730

ACCESSORIES

- Simply Scored - 122334
- Mini Stampin' Dimensionals - 144108
- Brights Enamel Shapes - 141680
- Paper Snips - 103579
- Snail Adhesive - 104332
- Tear & Tape Adhesive - 138995
- Paper Piercer - 126189

MEASUREMENTS

Basic Black: 4-1/2 x 7-1/2, 4-1/2 x 3

Pick a Pattern Designer Series Paper:
2-1/4 x 3-1/4, 8 x 3/4

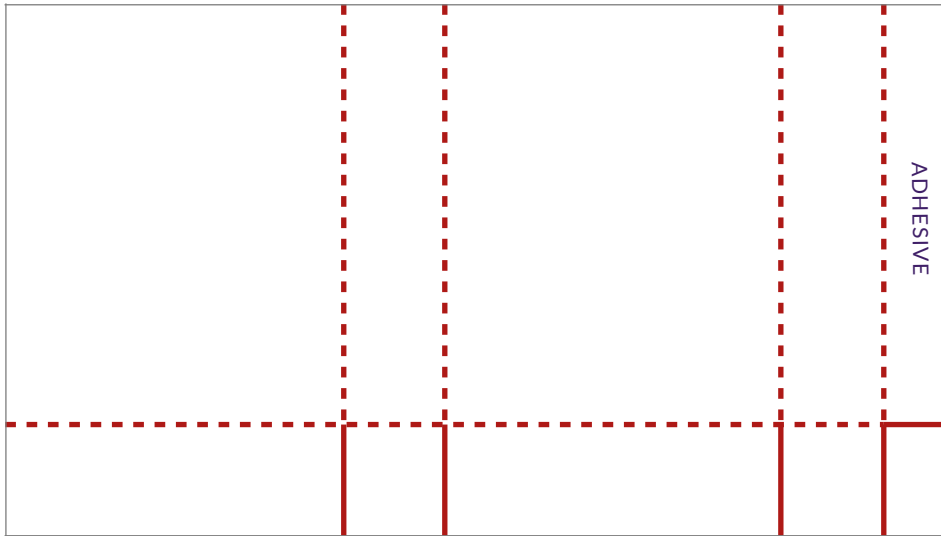
Whisper White: 1-3/4 x 1-7/8, 1-3/4 x

INSTRUCTIONS

1. Score the 4-1/2 x 7-1/2 piece of Basic Black card stock on the 7-1/2 side at 2-1/2, 3-1/2, 6, 7. Fold on score lines and assemble box (see diagram or video).
2. Score the 4-1/2 x 3 piece of Basic Black card stock at 1" on all four sides. Assemble lid (see diagram or video).
3. Wrap Pick a Pattern DSP around lid and attach.
4. Stamp Bella with Memento Ink on Whisper White card stock and color with Smoky Slate Stampin' Blends. Color collar with Rich Razzleberry.
5. Add image to box and then add a Rich Razzleberry Enamel heart.
6. Stamp greeting with Memento Ink and add to lid.
7. Stamp bird/raven with Memento Ink. Fussy cut it with Paper Ships and add to box with Mini Stampin' Dimensionals.

Please read instructions all the way through before you begin.

BOX



LID

ADHESIVE ON ALL FOUR TABS OF LID

