

Candy Cane Christmas Box

Angie Juda

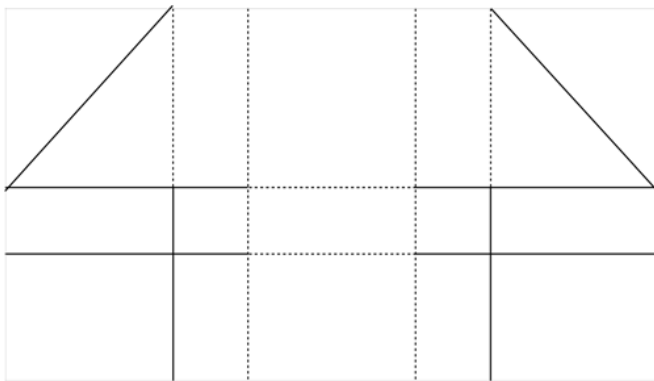
angie@chicnscratch.com

ChicnScratch.com



Measurements - Candy Cane Lane DSP: 8-1/2 x 11, Red Glimmer: 2-1/2 Scallop Circle, Whisper White: 2" Circle

Score on portrait side @ 3-1/4 & 4-1/4 - Score on landscape side @ 3, 4, 7, 8



Cut on Solid Lines - Score on Dotted Lines

Candy Cane Christmas Box

Angie Juda
angie@chicnscratch.com
ChicnScratch.com

- [Candy Cane Christmas Clear-Mount Stamp Set - 142040](#)
- [Candy Cane Christmas Wood-Mount Stamp Set - 142037](#)
- [Brights Stampin' Write Markers - 131259](#)
- [Neutrals Stampin' Write Markers - 131261](#)
- [Candy Cane Lane Designer Series Paper - 141981](#)
- [Candy Cane Lane Baker's Twine - 141983](#)
- [Whisper White 8-1/2" X 11" Cardstock - 100730](#)
- [Red Glimmer Paper - 121790](#)
- [Guesseted Cellophane Bags - 141704](#)
- [2" \(5.1 Cm\) Circle Punch - 133782](#)
- [Layering Circle Framelits Dies - 141705](#)
- [Stampin' Dimensionals - 104430](#)
- [Simply Scored - 122334](#)
- [Big Shot - 113439](#)
- [Magnetic Platform - 130658](#)