

# Mini Tote Box

Angie Juda

[angie@mychicnscratch.net](mailto:angie@mychicnscratch.net)

[ChicnScratch.com](http://ChicnScratch.com)



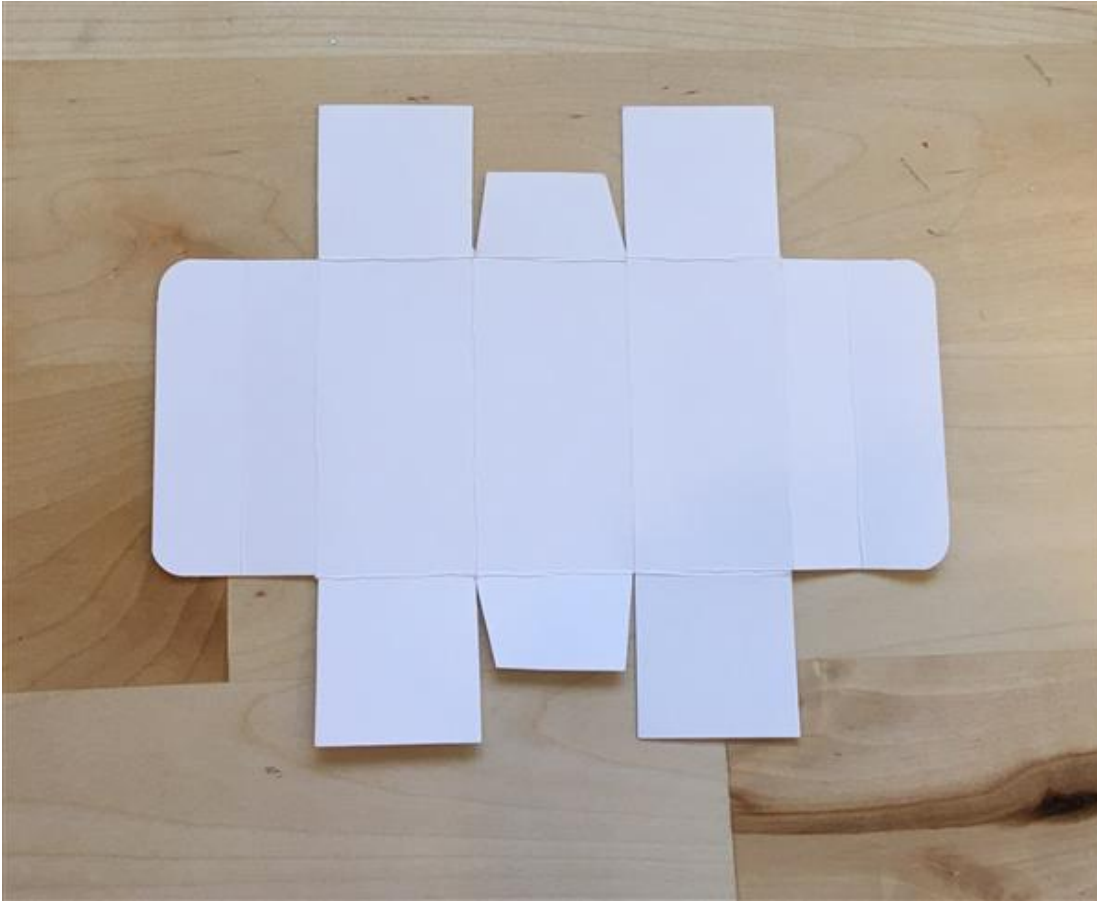
Measurements: DSP - 5-1/2 x 6-7/8, Whisper White: 3/4 x 4

## Directions:

1. Score the DSP on the portrait side first at 1-3/8 & 4-1/8.
2. Turn on landscape side and score @ 3/4, 1-3/8, 2-3/4, 4-1/8, 5-1/2, 6-1/8
3. Fold on score lines and use Bone Folder to burnish.
4. Turn on landscape side and remove the four corners. Cut up to score lines, trim middle tab, add adhesive and assemble box (See picture below).
5. Bring top of box together and punch hole for ribbon with the 1/8" Handheld Circle Punch. Add Ribbon and bring it together with the White Bakers Twine.
6. Stamp image with Watermelon Wonder ink and then use the Banner Triple Punch on each end to flag.
7. Add image to the front of box with a Dimensional.
8. Add Rhinestones.

# Mini Tote Box

Angie Juda  
[angie@mychicscratch.net](mailto:angie@mychicscratch.net)  
[ChicnScratch.com](http://ChicnScratch.com)



# Mini Tote Box

Angie Juda

[angie@mychicnscratch.net](mailto:angie@mychicnscratch.net)

[ChicnScratch.com](http://ChicnScratch.com)

- [Party Wishes Clear-Mount Stamp Set - 140961](#)
- [Party Wishes Wood-Mount Stamp Set - 140651](#)
- [Watermelon Wonder Classic Stampin' Pad - 138323](#)
- [Birthday Bouquet Designer Series Paper - 140557](#)
- [Whisper White 8-1/2" X 11" Cardstock - 100730](#)
- [Watermelon Wonder 1" Dotted Lace Trim - 138425](#)
- [Banner Triple Punch - 138292](#)
- [Whisper White Baker's Twine - 124262](#)
- [Simply Scored - 122334](#)
- [Stampin' Dimensionals - 104430](#)
- [Snail Permanent Adhesive - 104332](#)
- [1/8" Circle Punch - 134365](#)
- [Rhinestone Basic Jewels - 119246](#)