

# Mini Tote Box

Angie Juda

[angie@mychicnscratch.net](mailto:angie@mychicnscratch.net)

[ChicnScratch.com](http://ChicnScratch.com)



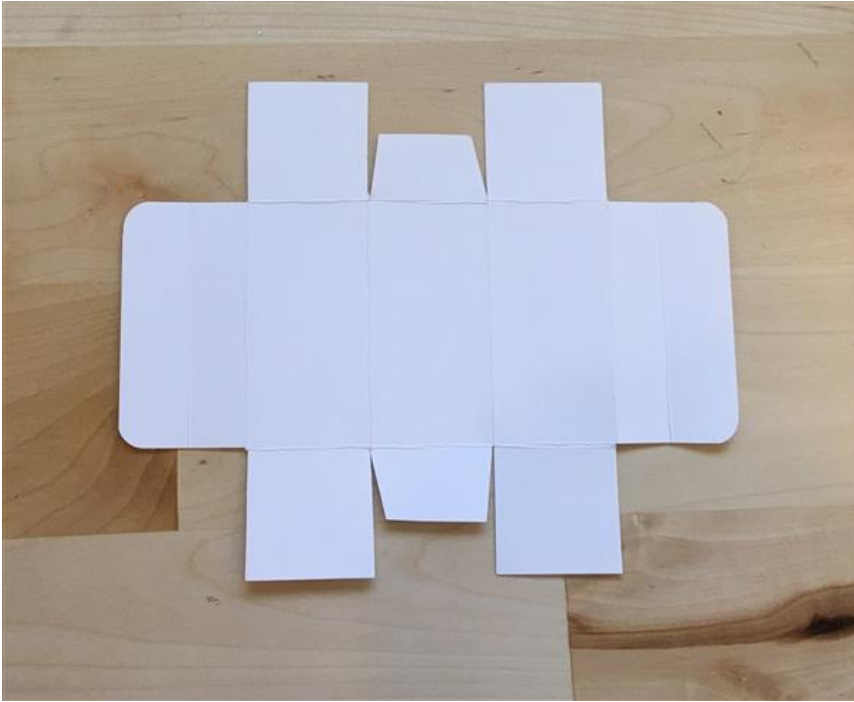
Measurements: DSP - 5-1/2 x 6-7/8, Whisper White: 1-1/4 Circle, Lost Lagoon (in colors): 1-3/8 Circle, Dazzling Diamonds Glimmer: 1-3/4 Scallop Circle

## Directions:

1. Score the DSP on the portrait side first at 1-3/8 & 4-1/8.
2. Turn on landscape side and score @ 3/4, 1-3/8, 2-3/4, 4-1/8, 5-1/2, 6-1/8
3. Fold on score lines and use Bone Folder to burnish.
4. Turn on landscape side and remove the four corners. Cut up to score lines, trim middle tab, add adhesive and assemble box (See picture below).
5. Bring top of box together and punch hole for ribbon with the 1/8" Handheld Circle Punch. Add Ribbon and bring it together with the White Bakers Twine.
6. Stamp image and cut out with the 1-1/4 Circle Punch. Add it to a 1-3/8 Circle with Snail Adhesive. Add it to a Dazzling Diamonds Glimmer Paper 1-3/4 Scallop Circle with a Dimensional.
7. Add image to the front of box with a Dimensional.

# Mini Tote Box

Angie Juda  
[angie@mychicscratch.net](mailto:angie@mychicscratch.net)  
[ChicnScratch.com](http://ChicnScratch.com)



# Mini Tote Box

Angie Juda

[angie@mychicnscratch.net](mailto:angie@mychicnscratch.net)

[ChicnScratch.com](http://ChicnScratch.com)

- [Circle Of Spring Photopolymer Stamp Set - 138964](#)
- [Lost Lagoon Classic Stampin' Pad - 133644](#)
- [Hello Honey Classic Stampin' Pad - 133643](#)
- [Blackberry Bliss Classic Stampin' Pad - 133642](#)
- [Mossy Meadow Classic Stampin' Pad - 133645](#)
- [Tangelo Twist Classic Stampin' Pad - 133646](#)
- [Dazzling Diamonds Glimmer Paper - 135315](#)
- [Whisper White 8-1/2" X 11" Cardstock - 100730](#)
- [Lost Lagoon 8-1/2" X 11" Cardstock - 133679](#)
- [Hello Honey 8-1/2" X 11" Cardstock - 133678](#)
- [Blackberry Bliss 8-1/2" X 11" Cardstock - 133675](#)
- [Mossy Meadow 8-1/2" X 11" Cardstock - 133676](#)
- [Tangelo Twist 8-1/2" X 11" Cardstock - 133677](#)
- [Pool Party 3/8" \(1 Cm\) Glitter Ribbon - 140561](#)
- [Whisper White 3/8" Stitched Satin Ribbon - 138429](#)
- [1-1/4" Circle Punch - 119861](#)
- [1-3/8" Circle Punch - 119860](#)
- [1-3/4" Scallop Circle Punch - 119854](#)
- [1/8" Circle Handheld Punch - 140972](#)
- [Punch Corner Project Life - 135346](#)
- [Whisper White Baker's Twine - 124262](#)
- [Simply Scored - 122334](#)
- [Stampin' Dimensionals - 104430](#)
- [Snail Permanent Adhesive - 104332](#)